

BOARD OF WATER SUPPLY

CITY AND COUNTY OF HONOLULU
630 SOUTH BERETANIA STREET
HONOLULU, HI 96843



September 21, 2011

PETER B. CARLISLE, MAYOR

RANDALL Y. S. CHUNG, Chairman
DENISE M. C. DE COSTA
THERESIA C. McMURDO
DUANE R. MIYASHIRO
ADAM C. WONG

WESTLEY K.C. CHUN, Ex-Officio
GLENN M. OKIMOTO, Ex-Officio

DEAN A. NAKANO
Acting Manager

NOTICE

The Regular Meeting of the Board of Water Supply will convene on Thursday, September 29, 2011 at 2:00 p.m. in the Board Room, Public Service Building, 630 South Beretania Street, Honolulu, Hawaii.

The agenda for the regular meeting is as follows:

ITEMS REQUIRING BOARD ACTION

1. Adoption of Resolution No. 815, 2011 - Anthony R. Guerrero, Jr., Resolution of Appreciation
2. Adoption of Resolution No. 816, 2011 – Kurt K. Tsue, 2011 Employee of the Year
3. Adoption of Resolution No. 817, 2011 – Daryl K. Hiromoto, 2011 Manager of the Year
4. Approval of the Minutes of the Public Hearing and Regular Meeting held on August 22, 2011

ITEMS FOR INFORMATION

1. Financial Update for the Period Ended August 31, 2011
2. Recruitment and Separation Status
3. Status Update of Groundwater Levels at Index Stations
4. Main Repair Report

EXECUTIVE SESSION

1. Approval of the Minutes of the Executive Session Meeting held on July 25, 2011
2. Approval of the Minutes of the Special Executive Session Meeting held on August 15, 2011
3. Approval of the Minutes of the Executive Session Meeting held on August 22, 2011
4. To Consult with the Board's Attorney on Questions and Issues Pertaining to the Board's Powers, Duties, Privileges, Immunities and Liabilities Regarding Personnel Matters and Contractual Obligations [HRS §92-5(a)(4)]
5. To Consider the Recruitment and Hiring of a Manager and Chief Engineer Where Consideration of Matters Affecting Privacy will be Involved [HRS §92-5(a)(2)]

Persons wishing to speak are requested to register by noon with Nancy Tano, Phone 748-5061 or Fax 550-9114, by providing your name, phone number and subject matter of testimony. Testimony is limited to three minutes and shall be presented by the registered speaker only. Any questions, please call 748-5061.

MINUTES

REGULAR MEETING OF THE BOARD OF WATER SUPPLY

September 29, 2011

At 2:02 PM on September 29, 2011 in the Board Room of the Public Service Building at 630 South Beretania Street, Honolulu, Hawaii, Vice-Chairman De Costa called to order the Regular Meeting of the Board.

Present: Denise M. C. De Costa, Vice Chair
Theresia C. McMurdo
Duane R. Miyashiro
Adam C. Wong
Westley K. C. Chun
Glenn M. Okimoto

Also Present: Dean Nakano, Acting Manager
Brendan Bailey
Darwin Ching
Bryan Gallagher
Daryl Hiromoto
Kevin Ihu
Erwin Kawata
Paul Kikuchi
Tracy Kitaoka
Jan Kemp
Keoni Mattos
Jonathan Suzuki
Jason Takaki
Karen Tom
Kurt Tsue
Alex Ubiadas
Barry Usagawa
Susan Uyesugi
Ron Wada

Others Present: Bob Godbey, Corporation Counsel
Krishna Jayaram, Deputy Corporation Counsel
Dan Lawrence, Deputy Corporation Counsel

Absent: Randall Y. S. Chung, Chair



BOARD OF WATER SUPPLY

CITY AND COUNTY OF HONOLULU

RESOLUTION NO. 815, 2011

ANTHONY R. GUERRERO, JR.

**IN APPRECIATION FOR SERVING AS A MEMBER OF THE
BOARD OF WATER SUPPLY**

WHEREAS, ANTHONY R. GUERRERO, JR., has served as a member of the Board of Water Supply (BWS), City and County of Honolulu, since October 2010; and

WHEREAS, MR. GUERRERO's extensive knowledge and acumen as a successful business professional, acquired during his 40-plus years in the banking industry, has been an asset to the Board; and

WHEREAS, his experience as Vice Chairman of First Hawaiian Bank and service on many other community Boards of Directors made MR. GUERRERO a helpful resource in Board deliberations, as he provided valuable insight and counsel to its members and the BWS management; and

WHEREAS, ANTHONY GUERRERO's knowledge and experience in financial and organizational matters lent to his credibility regarding administrative issues; and the esteem of his colleagues have resulted in additional recognition and respect for the Board; and

WHEREAS, during MR. GUERRERO's tenure as a Board member, he has volunteered his time and expertise to help effect business and policy decisions for the Board that will impact the direction and operations of this Department for many years to come; and

WHEREAS, MR. GUERRERO's voluntary service demonstrates his commitment to maintain a municipal water system deserving of trust for the public it serves; now, therefore,

BE IT RESOLVED by the Members of the Board of Water Supply, City and County of Honolulu, that we do hereby express to ANTHONY R. GUERRERO, JR., our appreciation and gratitude for his committed and effective service to this Board and Department; and

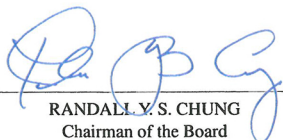
BE IT FURTHER RESOLVED that the Members of this Board extend to ANTHONY GUERRERO our aloha and best wishes for his continued success and well-being in all his future endeavors; and

BE IT FINALLY RESOLVED that this Resolution be presented to ANTHONY R. GUERRERO, JR.



Resolution No. 815, 2011

Adopted this 29th day of September, 2011
Board of Water Supply, Honolulu, Hawaii



RANDALL Y. S. CHUNG
Chairman of the Board

MOTION TO
ADOPT

Westley Chun motioned to Adopt Resolution No. 815, 2011,
In Appreciation to Anthony R. Guerrero, Jr., for serving as a Member of the
Board of Water Supply. The motion was seconded by Theresia McMurdo
and unanimously approved.

RESOLUTION NO. 815 2011 – IN APPRECIATION TO ANTHONY R. GUERRERO, JR. FOR SERVING AS A MEMBER OF THE BOARD OF WATER SUPPLY - WAS ADOPTED AT THE SEPTEMBER 29, 2011 BOARD MEETING			
	AYE	NO	COMMENT
RANDALL Y. S. CHUNG			ABSENT
DENISE M. C. DE COSTA	X		
THERESIA C. MCMURDO .	X		
DUANE R. MIYASHIRO	X		
ADAM C. WONG	X		
WESTLEY K. C. CHUN	X		
GLENN M. OKIMOTO	X		



BOARD OF WATER SUPPLY
CITY AND COUNTY OF HONOLULU

RESOLUTION NO. 816, 2011

KURT K. TSUE
2011 EMPLOYEE OF THE YEAR

WHEREAS, KURT K. TSUE, a conscientious and dependable employee since joining the Board of Water Supply (BWS) in September 2008 as an Information Specialist II, was selected as the Board of Water Supply (BWS) Employee of the Year for 2011; and

WHEREAS, KURT K. TSUE's diligence and exceptional handling of his own responsibilities allowed him to successfully take on managerial duties as the Acting Information Officer, and whose strong work ethic is reflected in his annual performance evaluation ratings and in the high quality of work he produces, which resulted in MR. TSUE's recent promotion to that position on a permanent basis; and

WHEREAS, as Acting Information Officer, MR. TSUE frequently put in long, afterwork hours to successfully coordinate and strategize dissemination of timely and accurate information to Oahu rate payers regarding the Department's efforts to provide safe and dependable drinking water now and into the future; and

WHEREAS, his dedication to the BWS is evident in his continued efforts to challenge himself and the Communications team to continually improve BWS public education and outreach programs, resulting in the recent launch of the Department's social media program and the steady increase in the scope and frequency of educational workshops; and

WHEREAS, MR. TSUE's professionalism, together with his deep insight, decisive action, humble ways, and commitment to strive for excellence in all he does, has earned the respect and esteem of his subordinates, peers, and supervisors; and

WHEREAS, he has pursued voluntary self-development by taking various courses to learn essential emergency management, leadership, and managerial skills to provide valuable and meaningful contributions to Department operations; and

WHEREAS, despite the multiple demands on his time from the dual roles as Information Specialist II and Acting Information Officer, MR. TSUE still found time the past three years to serve as an officer for the BWS's Babbling Brook Toastmasters Club, supporting and encouraging the efforts of his fellow BWS employees to improve their communications and leadership skills; and

WHEREAS, KURT K. TSUE has been selected as the 2011 Board of Water Supply Employee of the Year and will go on to represent the men and women of the Department in the upcoming City Employee of the Year Recognition Ceremony, bringing pride and honor to the Board of Water Supply, his family and friends; now, therefore,

BE IT RESOLVED by the Members of the Board of Water Supply, City and County of Honolulu, that we do hereby convey to KURT K. TSUE our sincere appreciation for his outstanding service to the Department and to the City and County of Honolulu; and

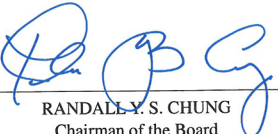
BE IT FURTHER RESOLVED that the Members of this Board express to KURT K. TSUE our sincere congratulations upon his selection as the Board of Water Supply Employee of the Year for 2011; and

BE IT FINALLY RESOLVED that this resolution be presented to MR. TSUE with our heartfelt aloha and best wishes for success in all his future endeavors.



Resolution No. 816, 2011

Adopted this 29th day of September, 2011
Board of Water Supply, Honolulu, Hawaii



RANDALL Y. S. CHUNG
Chairman of the Board

MOTION TO
ADOPT

Westley Chun motioned to Adopt Resolution No. 816, 2011,
Kurt K. Tsue – 2011 Board of Water Supply Employee of the Year. The
motion was seconded by Theresia McMurdo and unanimously approved.

In recognition as the BWS 2011 Employee of the Year, Vice Chair De Costa presented Mr. Tsue with a plaque, a framed signed copy of the resolution, and a monetary gift. Mr. Tsue will represent the Board of Water Supply at the City and County of Honolulu's Annual Employees' Recognition Program next month.

RESOLUTION NO. 816, 2011 – KURT K. TSUE – 2011 BOARD OF WATER SUPPLY EMPLOYEE OF THE YEAR - WAS ADOPTED AT THE SEPTEMBER 29, 2011 BOARD MEETING			
	AYE	NO	COMMENT
RANDALL Y. S. CHUNG			ABSENT
DENISE M. C. DE COSTA	X		
THERESIA C. MCMURDO	X		
DUANE R. MIYASHIRO	X		
ADAM C. WONG	X		
WESTLEY K. C. CHUN	X		
GLENN M. OKIMOTO	X		



**BOARD OF WATER SUPPLY
CITY AND COUNTY OF HONOLULU**

RESOLUTION NO. 817, 2011

**DARYL K. HIROMOTO
2011 MANAGER OF THE YEAR**

WHEREAS, DARYL K. HIROMOTO, Acting Program Administrator with the Field Operations Division, has been selected as the Board of Water Supply's (BWS) Manager of the Year for 2011; and

WHEREAS, MR. HIROMOTO joined the BWS as a pipefitter apprentice in January 1982, and steadily worked his way through the ranks to his current position which he has held since the end of 2009, gaining first-hand knowledge about the operations and various staff functions of the Field Operations Division and the BWS infrastructure that are of great benefit to the Department; and

WHEREAS, MR. HIROMOTO's 29 years of personal field experience, leadership, and dedication have enabled him to implement various initiatives that promoted the Department's organizational sustainability such as the groundbreaking Multi-Skilled Worker program that has helped the BWS achieve greater efficiencies and savings each year since its implementation and improved overall performance in pipeline maintenance and emergency repair, as well as his initiative to rotate pipefitter apprentices through various BWS districts to provide them with a thorough knowledge of the different segments of the island water system; and

WHEREAS, under DARYL K. HIROMOTO's oversight, BWS water facilities are properly maintained to meet stringent federal and state drinking water requirements, ensuring a safe and dependable water supply for Oahu rate payers; and

WHEREAS, he generously and willingly shares his knowledge with members of his Field Operations team and strategically delegates challenging tasks to middle-managers in his division to advance their professional development, taking the necessary time to provide guidance and support; and

WHEREAS, this 2007 BWS Employee of the Year gives back to the community through the Hawaii Section of the American Water Works Association, where he served as a past chairman, Board member, and coordinator of the annual pipe-tapping competition, as well as his service as a Board Director for the BWS Federal Credit Union; and

WHEREAS, MR. HIROMOTO has proven himself to be a dedicated, dependable, and caring individual who leads by example and personifies attributes that employees desire in their leaders; and this ability to inspire others has earned him the respect of his subordinates, colleagues, and BWS management; and

WHEREAS, MR. HIROMOTO's selection as the 2011 Board of Water Supply Manager of the Year and his nomination to the City Manager of the Year Recognition Ceremony has brought pride and honor to the BWS, his family and friends; now, therefore,

BE IT RESOLVED by the Members of the Board of Water Supply, City and County of Honolulu, that we do hereby express to DARYL K. HIROMOTO our heartfelt appreciation for his outstanding service to the Department and to the City and County of Honolulu; and

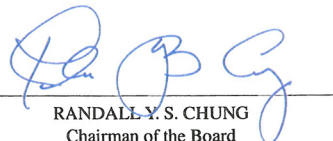
BE IT FURTHER RESOLVED that the Members of this Board express our sincere congratulations upon his selection as the Board of Water Supply Manager of the Year for 2011; and

BE IT FINALLY RESOLVED that a copy of this Resolution be presented to DARYL K. HIROMOTO with our warmest aloha and best wishes in all his future endeavors.



Resolution No. 817, 2011

Adopted this 29th day of September, 2011
Board of Water Supply, Honolulu, Hawaii


RANDALL Y. S. CHUNG
Chairman of the Board

MOTION TO
ADOPT

Westley Chun motioned to Adopt Resolution No. 817, 2011,
Daryl K. Hiromoto – 2011 Board of Water Supply Manager of the Year.
The motion was seconded by Theresia McMurdo and unanimously
approved.

In recognition as the BWS 2011 Manager of the Year, Vice Chair De Costa presented Mr.
Hiromoto with a plaque, a framed signed copy of the resolution, and a monetary gift. Mr.
Hiromoto will represent the Board of Water Supply at the City and County of Honolulu's Annual
Employees' Recognition Program next month.

RESOLUTION NO. 817, 2011 – DARYL K. HIROMOTO –
2011 BOARD OF WATER SUPPLY MANAGER OF THE
YEAR - WAS ADOPTED AT THE SEPTEMBER 29, 2011
BOARD MEETING

	AYE	NO	COMMENT
RANDALL Y. S. CHUNG			ABSENT
DENISE M. C. DE COSTA	X		
THERESIA C. MCMURDO	X		
DUANE R. MIYASHIRO	X		
ADAM C. WONG	X		
WESTLEY K. C. CHUN	X		
GLENN M. OKIMOTO	X		

APPROVAL
OF MINUTES

Approval of the Minutes of the Public Hearing and Regular Meeting held on August 22, 2011.

MOTION
TO APPROVE

Adam Wong and Westley Chun motioned and seconded, respectively, to approve the Minutes of the Public Hearing and Regular Session Meeting of August 22, 2011. The motion was unanimously carried.

FINANCIAL
UPDATE

Chairman and Members
Board of Water Supply
City and County of Honolulu
Honolulu, Hawaii 96843

Chairman and Members:

Subject: Financial Update for the Period Ended August 31, 2011

The following Board of Water Supply's financial reports are attached:

- Budget vs Actual Revenue and Expense Totals
- Statement of Revenues, Expenses and Change in Net Assets
- Balance Sheet
- Budget vs Actual Appropriate Budget – Total BWS Summary

Respectfully submitted,

/s/ Dean A. Nakano
DEAN A. NAKANO
Acting Manager

Attachments"

The foregoing was for information only.

DISCUSSION: The Board requested additional information be included with the financial reports.

Budget vs. Actual
Revenue and Expense Totals
As of August 31, 2011

	YTD Actuals	YTD Budget	Favorable/ (Unfavorable) Variance
Revenues	25,395,000	26,390,000	(995,000)
Operating Expenses	(15,220,000)	(26,345,000)	11,125,000
Net Revenues (expenditures)	<u>10,175,000</u>	<u>45,000</u>	<u>10,130,000</u>

Board Of Water Supply
Statement of Revenues, Expenses And Change In Net Assets
For the Two Months Ending August 31, 2011

Current Month Actual	% Revenue	Last Year Actual	% Revenue	Description	Year to Date Actual	% Revenue	Last Year to Date Actual	% Revenue	% Change
REVENUE									
11,980,165.88	100.00	11,155,878.92	100.00	OPERATING REVENUE	24,804,817.59	100.00	26,099,176.33	100.00	4.96-
11,980,165.88	100.00	11,155,878.92	100.00	REVENUE	24,804,817.59	100.00	26,099,176.33	100.00	4.96-
OPERATING EXPENSES									
2,245,876.52-	18.75	2,332,031.04-	20.90	LABOR COSTS	4,566,590.79-	18.41	4,705,471.89-	18.03	2.95-
252,774.12-	2.11	510,748.86-	4.58	SERVICES	654,083.90-	2.64	1,044,962.06-	4.00	37.41-
158,350.57-	1.32	200,162.36-	1.79	SUPPLIES	174,738.34-	.70	199,645.22-	.76	12.48-
41,853.36-	.35	35,357.79	.32	EDUCATION & TRAINING	42,055.76-	.17	18,093.04-	.07	132.44
2,033,413.57-	16.97	1,094,867.69-	9.81	UTILITIES	2,741,857.58-	11.05	1,135,795.86-	4.35	141.40
206,138.19-	1.72	36,967.28	.33	REPAIR AND MAINTENANCE	237,947.56-	.96	447,605.16-	1.72	46.84-
2,138,671.89-	17.85	1,397,474.72-	12.53	MISC	2,918,989.88-	11.77	2,215,417.53-	8.49	31.76
1,175,287.59-	9.81	497,602.49-	4.46	RETIREMENT SYSTEM CONTRIBUTIO	1,351,919.64-	5.45	1,305,237.87-	5.00	3.58
2,040.56-	.02	18,317.89-	.16	MISC EMPLOYEES' BENEFITS	355,063.74	1.43	22,514.40	.09	1,477.05
8,254,406.37-	68.90	5,978,879.98-	53.59	OPERATING EXPENSES	12,333,119.71-	49.72	11,049,714.23-	42.34	11.61
158,804.44-	1.33	113,570.80-	1.02	NON OPERATING REVENUE AND EXPE	245,129.88-	.99	172,484.16-	.66	42.12
2,483,461.50	20.73	1,684,006.24	15.10	CONTRIBUTION IN AID	2,860,751.97	11.53	1,936,028.41	7.42	47.76
4,167,661.49-	34.79	3,296,459.62-	29.55	OTHER EXPENSES	7,752,988.67-	31.26	6,859,218.30-	26.28	13.03
1,882,755.08	15.72	3,450,974.76	30.93	Change In Net Assets	7,334,331.30	29.57	9,953,788.05	38.14	26.32-

Board Of Water Supply
Balance Sheet
As of August 31, 2011

		Amounts		Change	
Description	Current	Last Month End	Last Year End	This Month	This Year
ASSETS					
CURRENT ASSETS	27,788,890.79	27,621,393.05	26,721,776.49	167,497.74	1,067,114.30
RESTRICTED ASSETS	1,268,562.46	1,482,637.77	16,977,096.61	-214,075.31	-15,708,534.15
INVESTMENTS	175,431,709.39	173,092,644.14	170,566,345.23	2,339,065.25	4,865,364.16
OTHER ASSETS	4,031,072.55	4,190,173.20	4,069,356.13	-159,100.65	-38,283.58
PROPERTY / PLANT	1,157,358,949.55	1,156,027,358.55	1,158,332,732.08	1,331,591.00	-973,782.53
TOTAL ASSETS	<u>1,365,879,184.74</u>	<u>1,362,414,206.71</u>	<u>1,376,667,306.54</u>	<u>3,464,978.03</u>	<u>-10,788,121.80</u>
LIABILITIES					
CURRENT LIABILITIES	9,337,341.02	7,610,078.21	25,051,498.39	1,727,262.81	-15,714,157.37
OTHER LIABILITIES	20,927,671.19	20,045,826.77	21,725,332.64	881,844.42	-797,661.45
BONDS PAYABLE, NONCURRENT	<u>318,089,986.31</u>	<u>319,116,870.59</u>	<u>319,700,620.59</u>	<u>-1,026,884.28</u>	<u>-1,610,634.28</u>
LIABILITIES	348,354,998.52	346,772,775.57	366,477,451.62	1,582,222.95	-18,122,453.10
NET ASSETS					
RETAINED EARNINGS	343,300,586.86	342,410,951.70	336,919,456.95	889,635.16	6,381,129.91
FUND BALANCE	594,633,831.66	594,633,831.66	594,633,831.66		
RESERVE FOR ENCUMBRANCES	76,178,679.03	77,068,314.19	82,559,808.94	-889,635.16	-6,381,129.91
CURRENT YEAR CHANGES TO FU	<u>3,411,088.67</u>	<u>1,528,333.59</u>	<u>-3,923,242.63</u>	<u>1,882,755.08</u>	<u>7,334,331.30</u>
NET ASSETS	1,017,524,186.22	1,015,641,431.14	1,010,189,854.92	1,882,755.08	7,334,331.30
TOTAL LIABILITIES AND NET ASSETS	<u>1,365,879,184.74</u>	<u>1,362,414,206.71</u>	<u>1,376,667,306.54</u>	<u>3,464,978.03</u>	<u>-10,788,121.80</u>

Board Of Water Supply
 Budget vs Actual Appropriation Budget - Total BWS Summary
 (\$000's)
 CIFIS 12820-3021
 AS OF 8/31/2011

9/13/2011 11:10:17

Page - 1

OPER UNIT ALL
 BUSINESS UNIT ALL

YTD-TO-DATE				Object Description	FOR THE FISCAL YEAR				
YTD Actuals	YTD Budget	Avail/ (Over)	%		Revenues/ Expend	Open Encumb	Annual Budget	Avail/ (Over)	%
<u>25,395</u>	<u>26,390</u>	<u>995</u>	<u>3.77</u>	<u>REVENUE</u>	<u>25,395</u>		<u>159,411</u>	<u>134,016</u>	<u>84.07</u>
OPERATING EXPENSES:									
5,013	7,219	2,206	30.56	Personnel Services	5,013		43,732	38,719	88.54
MATERIALS AND SUPPLIES									
832	2,448	1,616	66.01	Services	478	354	13,297	12,465	93.74
455	1,228	773	62.95	Supplies	254	201	7,269	6,814	93.74
2	63	61	96.83	Education & Training	2		463	461	99.57
	2	2	100.00	Utilities			10	10	100.00
141	1,064	923	86.75	Repairs & Maint	39	102	6,854	6,713	97.94
919	1,648	729	44.24	Misc	858	61	10,028	9,109	90.84
11	295	284	96.27	Equipment		11	2,920	2,909	99.62
3,490	3,763	273	7.25	Debt Service	3,490		22,577	19,087	84.54
FIXED CHARGES:									
1,940	4,674	2,734	58.49	Utilities	1,940		28,043	26,103	93.08
550	550			Case Fees	550		3,300	2,750	83.33
1,072	1,175	103	8.77	Retirement System Contribution	1,072		7,055	5,983	84.81
795	2,216	1,421	64.12	Misc Employees' Benefits	795		13,293	12,498	94.02
<u>15,220</u>	<u>26,345</u>	<u>11,125</u>	<u>42.23</u>	<u>TOTAL OPERATING EXPENDITURES</u>	<u>14,491</u>	<u>729</u>	<u>158,841</u>	<u>143,621</u>	<u>90.42</u>
<u>10,175</u>	<u>45</u>	<u>(10,130)</u>		<u>NET REVENUES (EXPENDITURES)</u>	<u>10,904</u>	<u>(729)</u>	<u>570</u>	<u>(9,605)</u>	

ITEM FOR INFORMATION NO. 2

BOARD OF WATER SUPPLY

City and County of Honolulu

RECRUITMENT AND SEPARATION STATUS

As of September 22, 2011

Total Filled Positions	517
Total Vacant Positions	157
Total Positions Under Recruitment (Phase 1)	47

Status of Positions Under Recruitment

Pending DHR Classification Action	4
Pending DHR Open List	7
Pending Updated PD	2
Pending IDCE	0
Pending Interview Questions	11
Pending Interviews	13
Anticipated Starts	10

Month	Filled	Separated
May, 2011	4	13
June, 2011	2	7
July, 2011	4	0
August, 2011	12	2
September, 2011	7	6

Legend:

DHR = Department of Human Resources, City and County of Honolulu

IDCE = Intra-Departmental Competitive Examination

PD = Position Description

DISCUSSION:

The Board requested a column be added for a month to month comparison and report separately the actual number of new hires.

"September 29, 2011

GROUNDWATER
LEVELS

Chairman and Members
Board of Water Supply
City and County of Honolulu
Honolulu, Hawaii 96843

Chairman and Members:

Subject: Status Update of Groundwater Levels at Index Stations

Two aquifer index wells are within a low groundwater status level for the production week that ended on September 10, 2011. Kaimuki and Punaluu are both under a caution condition. The weekly production average for the period was 143.35 million gallons per day.

The Board of Water Supply rainfall index for the month of August was 76 percent of normal with a 5-month moving average of 131 percent. As of September 20, 2011, the U.S. Drought Monitor indicated a D0 (abnormally dry) condition for the island of Oahu with severe conditions occurring within the lower major islands. The National Weather Service outlook through the end of December projects normal rainfall, with an upturn in rainfall for the first quarter of 2012. Aquifer head levels are still maintaining levels that reflect the lower production rates experienced this year.

Respectfully submitted,

/s/ Dean A. Nakano
DEAN A. NAKANO
Acting Manager

Attachments"

The foregoing was for information only.

DISCUSSION: None

PUMPAGE, HEAD, AND RAINFALL REPORT

Week of 9/04/11 to 9/10/11

STATION	MGD	HEAD	STATION	MGD	HEAD	STATION	MGD	HEAD		MGD	HEAD
METRO			WINDWARD			EWA-WAIANAE (CONT)			PH (CONT)		
KULIOUOU	0.00		WAIMANALO I	0.00		MAKAHA IV	0.00		PEARL CITY II	1.25	
WAILUPE	0.00		WAIMANALO II	0.19		MAKAHA V	0.12		PEARL CITY III	0.40	
WAIALAE-IKI	0.00		KUOU I	0.78		MAKAHA VI	0.00		WAIU	1.21	
AINA KOA	0.13		KUOU II	0.08		MAKAHA SHAFT	0.03	13.98	NEWTOWN	1.24	
AINA KOA II	0.83		KUOU III	0.71		KAMAILE	0.00		KAONOHI I	0.83	
WAIALAE SHAFT	0.00		LULUKU I	1.05		WAIANAE I	0.02		WAIMALU I	0.00	
MANOA II	0.00		HAIKU	0.30		WAIANAE II	0.83		AIEA	0.72	
PALOLO	1.17		IOLEKAA	0.01		WAIANAE III	0.00		AIEA GULCH 497	0.51	
KAIMUKI HIGH	3.38	22.83	KAHALUU	0.64		MAKAKILO	1.19		AIEA GULCH 550	0.25	
KAIMUKI LOW	0.32		WAIHEE	0.00		HONOULIULI I	1.25		HALAWA 277	1.57	
WILDER	7.66		KAHANA	0.87		HONOULIULI II	7.11		HALAWA 550	0.00	
BERETANIA HIGH	4.61	23.69	PUNALUU I	0.00	16.79	SUBTOTAL:	12.11		KAAHUMANU MTR (-)	0.00	
BERETANIA LOW	1.79		PUNALUU II	2.98		IMPORT FROM PH			KAAMILO FLO MTR (-)	0.00	
KALIHI HIGH	2.31	22.71	PUNALUU III	1.07		KAPOLEI LINE BSTR	0.02		KUNIA I	2.54	19.37
KALIHI LOW	1.49		KALUANUI	0.00		HONOULIULI LB FLOW	13.98		KUNIA II	2.12	
KAPALAMA	1.26		MAAKUA	0.00		EWA BEACH FLOW	3.63		KUNIA III	2.80	
KALIHI SHAFT	8.09		HAUULA	0.17		HONOULIULI I (-)	-1.25		HOAEAE	8.01	
MOANALUA	1.26	19.35				HONOULIULI II (-)	-7.11		EWA SHAFT	0.00	
SUBTOTAL:	34.30		KAHUKU	0.42		SUBTOTAL:	9.27		WAIPAHU INTCON. (-)	-1.47	
			OPANA						EWA-WAIANAE (-)	-9.27	
IMPORT FROM PH			WAIALEE I	0.00		PEARL HARBOR			PH LOCAL USE:	28.26	
HALAWA SHAFT	11.35	17.08	WAIALEE II	0.02		WAIHAWA	1.29		TOTAL SUBURBAN:	61.90	
KAAMILO	1.20		SUNSET BEACH	0.00		WAIHAWA II	2.12				
KALAUAO	9.52	17.54	SUBTOTAL:	9.08		MILILANI I	2.94		KALAUAO SPRINGS	0.66	
PUNANANI	11.40					MILILANI II	0.00		BARBERS POINT (NP)	1.13	
KAONOHI II	0.00		WIND. EXPORT	0.50		MILILANI III	0.93		GLOVER TUNNEL (NP)	0.24	
WAIMALU II	0.00	15.91				MILILANI IV	1.80				
KAAHUMANU	1.01		HALEIWA-WAIALUA			WAIPIO HTS.	0.34		HEAD CONDITION		
HECO WAIU	0.72		HALEIWA	0.04		WAIPIO HTS. I	0.19		CAUTION	ALERT	CRITICAL
MANANA	0.91		WAIALUA	3.63		WAIPIO HTS. II	0.34		Kaimuki		
KAAHUMANU FLOW MT	0.00		SUBTOTAL:	3.67		WAIPIO HTS. III	0.52		Punaluu		
KAAMILO FLOW MTR	0.00					WAIPAHU	1.47	19.40			
TOTAL IMP/EXP WAI. INT:	1.47		EWA-WAIANAE			WAIPAHU II	0.33				
IMPORT FRM WIND:	0.50		MAKAHA I	0.55		WAIPAHU III	0.00				
SUBTOTAL:	38.08		MAKAHA II	0.08		WAIPAHU IV	1.91				
			MAKAHA III	0.91		PEARL CITY SHAFT	0.96	15.37			
TOTAL METRO:	72.38					PEARL CITY I	0.42				

CWRM PERMITTED USE FOR BWS POTABLE SOURCES						PUMPAGE	2011	2010	GRAVITY	2011	2010
WATER DISTRICTS	A	B	C	D	E	SUBURB.	61.90	69.31	SUBURB.	8.69	8.98
	PERMITTED USE	2011	DIFF. B-A	YEAR/ DATE	DIFF. D-A	METRO	72.38	76.29	METRO	0.37	0.37
						TOTAL:	134.29	145.60	TOTAL:	9.06	9.35
HONOLULU	45.27	34.67	-10.59						Manoa	0.17	
WINDWARD	25.21	15.59	-9.62			NUUANU #5			Palolo	0.20	
NORTH SHORE	4.08	4.12	0.04			(rainfall)	0.76"	0.76"	Waim. I&II	0.15	
WAIHAWA	4.27	3.41	-0.86						Waim. III&IV	0.19	
WAIANAE	4.34	4.29	-0.05						Waihee incl.	1.00	
EWA-KUNIA	15.88	9.56	-6.32						Waihee tun.	3.60	
PEARL HARBOR	92.66	71.71	-20.95						Luluku	0.15	
TOTAL:	191.71	143.35	-48.36						Haiku	0.00	
									Kahaluu	1.86	
									Waia. C&C	1.40	
									Waia plant.	0.34	

DROUGHT STATUS REPORT
DRAFT IN MGD

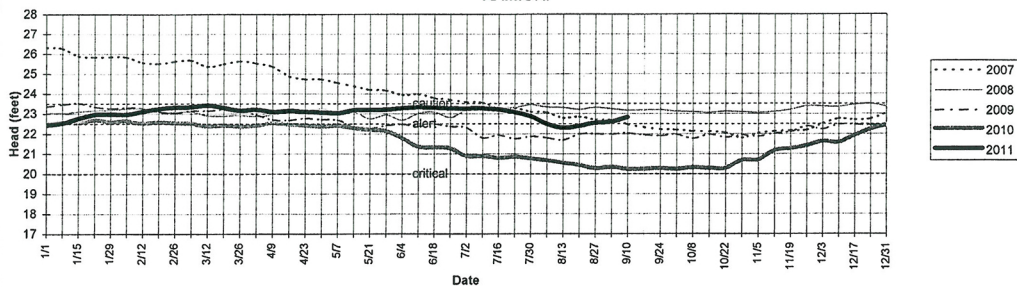
WATER USE DISTRICT	AUTHORIZED USE	2010	8/14-8/20 2011	2010	8/21-8/27 2011	2010	8/28-9/03 2011	2010	9/04-9/10 2011
HONOLULU	45.27	44.47	35.35	43.28	35.83	43.56	34.78	42.83	35.17
WINDWARD	25.21	18.51	15.56	18.64	15.17	19.00	14.73	17.71	15.09
NORTH SHORE	4.08	4.24	4.31	4.34	4.19	4.61	4.02	4.57	4.12
WAHIAWA	4.27	3.51	3.35	3.36	3.41	3.47	3.29	3.53	3.41
EWA-WAIANAE	20.22	23.25	22.61	23.29	23.05	22.69	23.31	22.01	23.13
PEARL HARBOR	92.66	63.07	66.13	63.31	64.10	63.06	62.58	64.29	62.44
TOTAL	191.71	157.05	147.31	156.24	145.76	156.40	142.71	154.94	143.35

Accounts for in-district pumpage and transfers

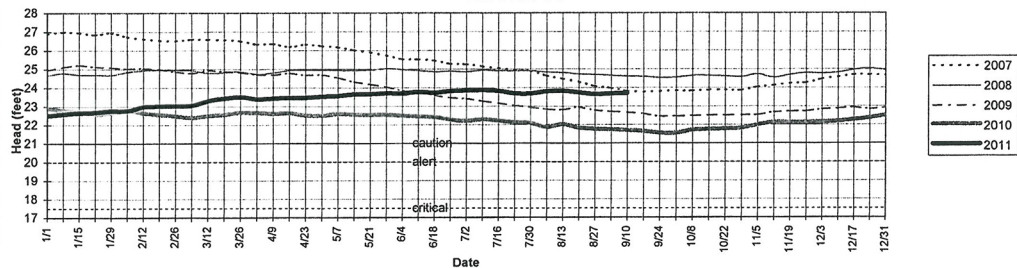
HEAD IN FEET

		2010	8/14-8/20 2011	2010	8/21-8/27 2011	2010	8/28-9/03 2011	2010	9/04-9/10 2011
HONOLULU									
KAIMUKI		20.42	22.39	20.27	22.54	20.33	22.60	20.22	22.83
BERETANIA		21.83	23.72	21.76	23.63	21.73	23.68	21.70	23.69
KALIHI		20.94	22.77	20.87	22.69	20.83	22.72	20.82	22.71
MOANALUA		18.02	19.39	17.95	19.39	17.89	19.35	17.90	19.35
PEARL HARBOR									
HALAWA		15.71	17.06	15.64	17.04	15.62	17.09	15.58	17.08
KALAUAO		15.68	17.52	15.58	17.50	15.59	17.54	15.58	17.54
PEARL CITY		13.60	15.36	13.53	15.35	13.56	15.37	13.54	15.37
WAIPAHU		17.33	19.37	17.29	19.36	17.27	19.41	17.30	19.40
KUNIA		17.26	19.36	17.17	19.33	17.18	19.36	17.23	19.37
EWA-WAIANAE									
MAKAHA		15.39	12.85	15.26	13.55	14.41	13.87	13.83	13.98
WINDWARD									
PUNALUU		14.91	16.89	14.70	16.81	14.80	16.80	14.69	16.79

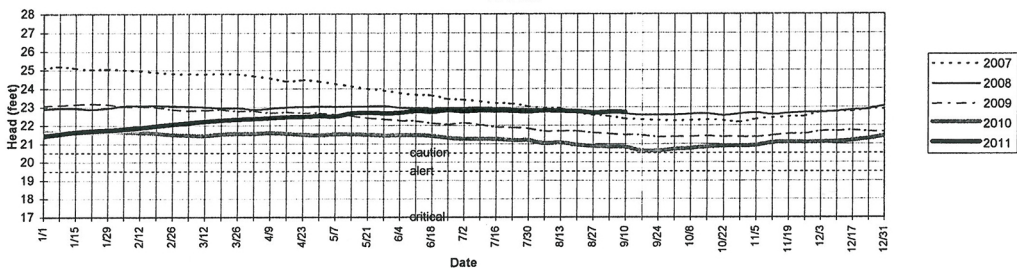
KAIMUKI



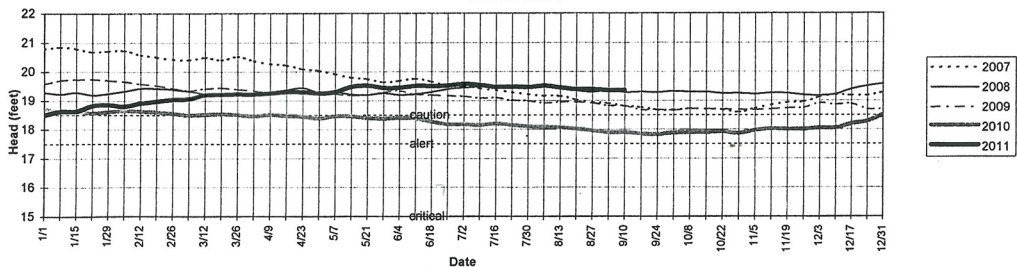
BERETANIA



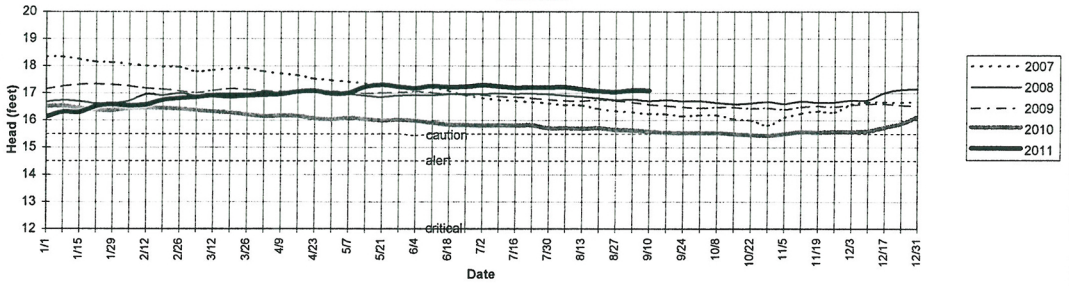
KALIHI



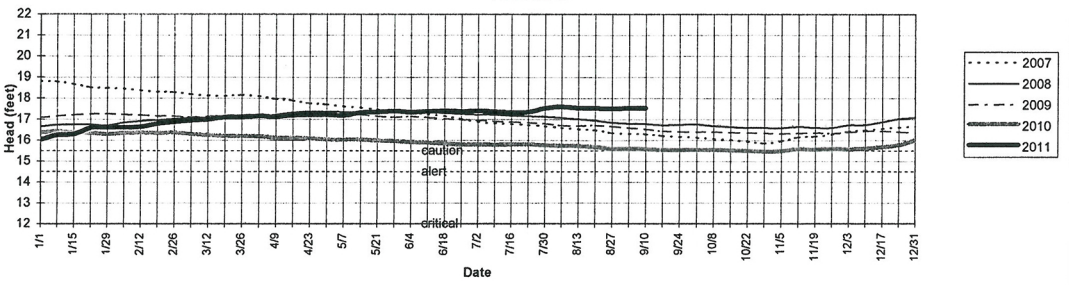
MOANALUA



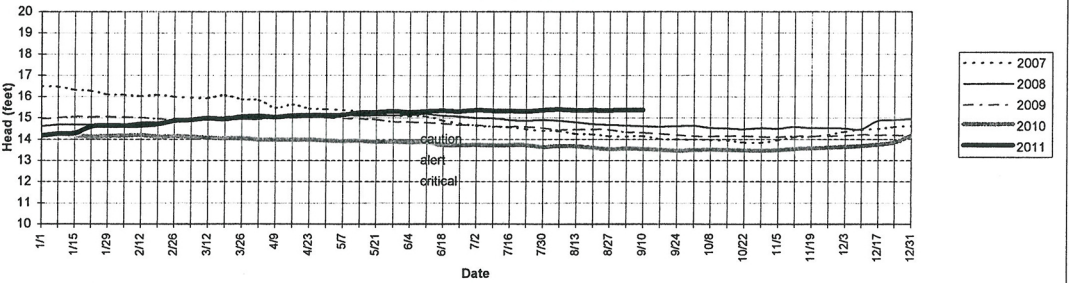
HALAWA



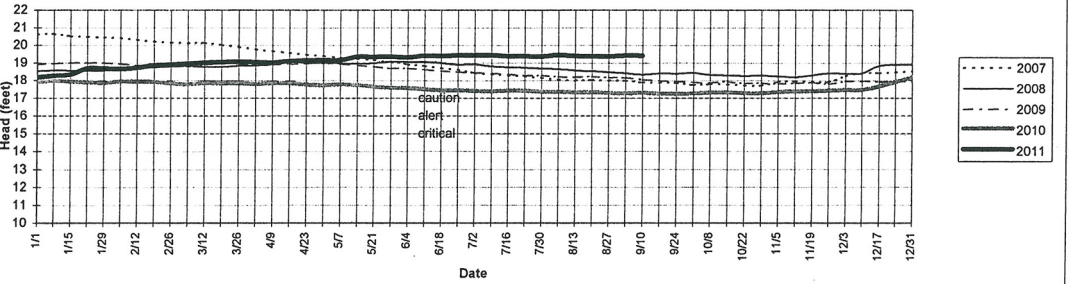
KALAUAO



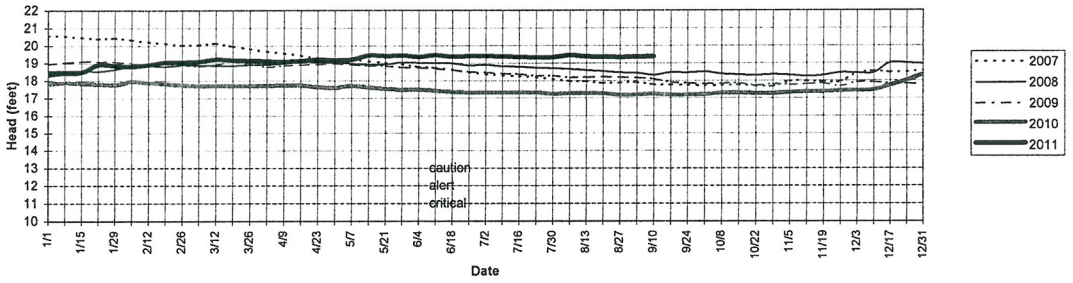
PEARL CITY



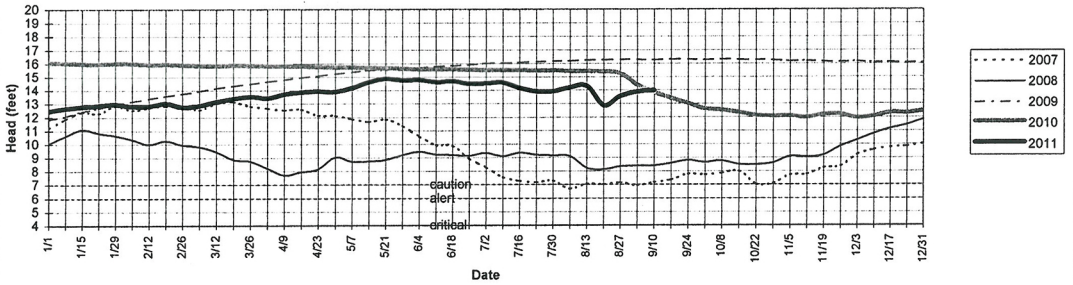
WAIPAHU



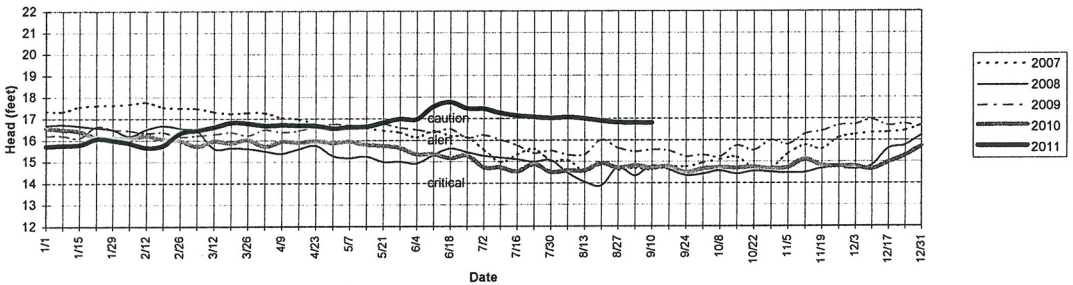
KUNIA



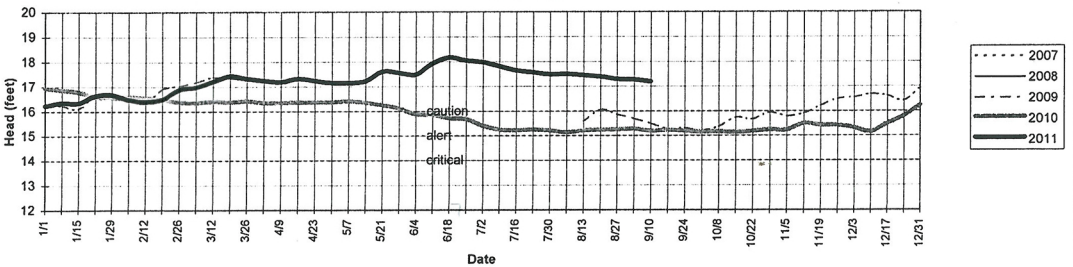
MAKAHA



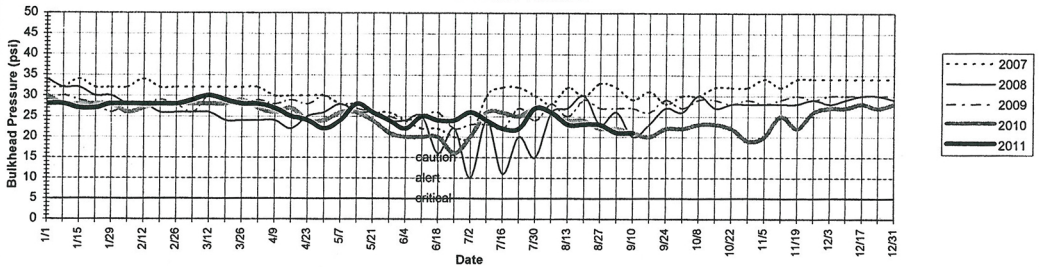
PUNALUU



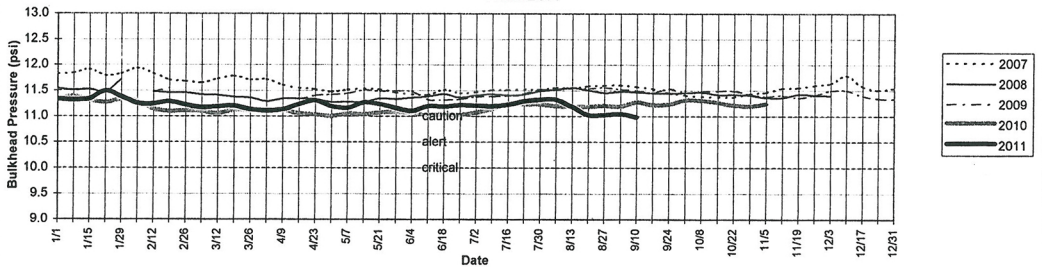
KALUANUI



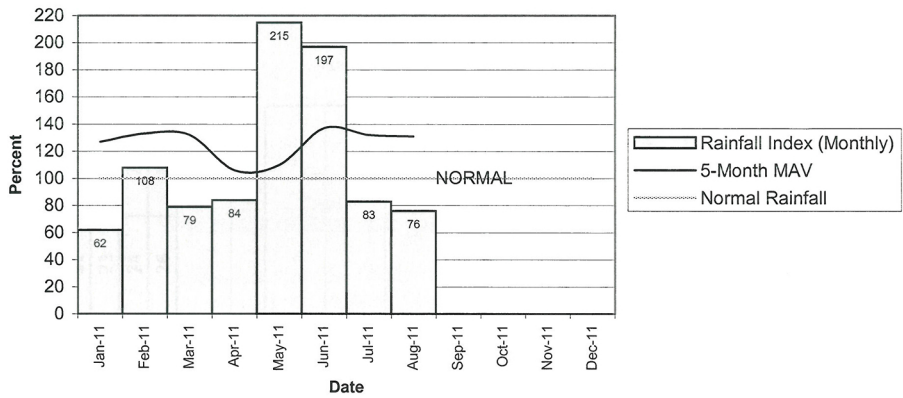
WAIHEE TUNNEL



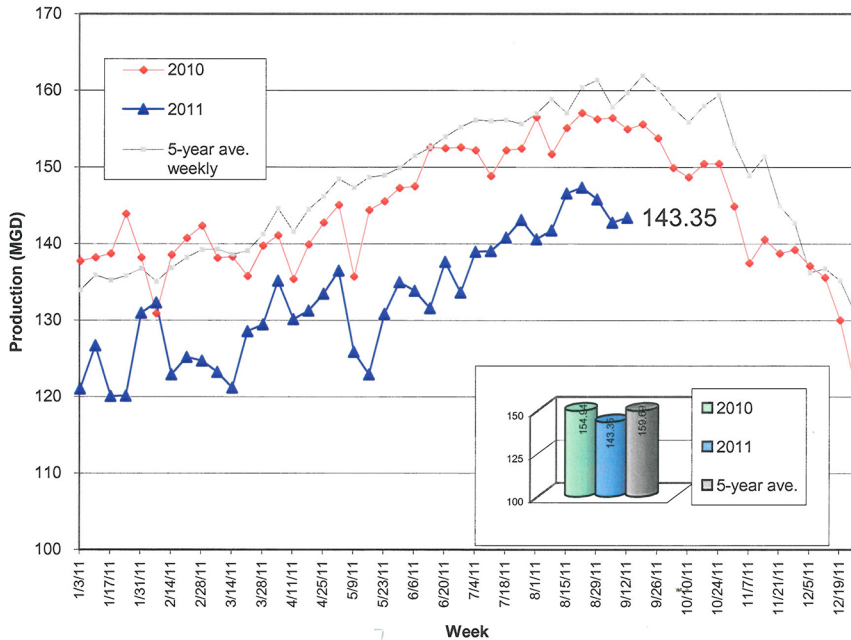
WAIALUA



HONOLULU WATERSHED AREA Rainfall Intake



Weekly Production

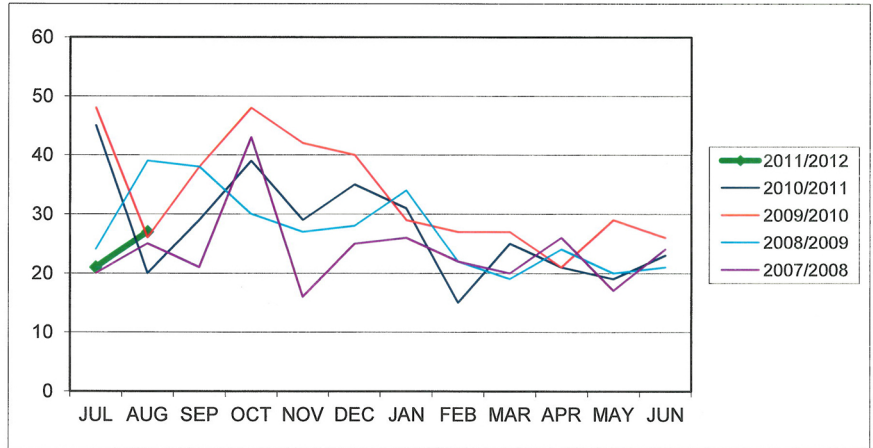


MAIN REPAIR REPORT

AUGUST 2011

	JUL	AUG	SEP	OCT	NOV	DEC	JAN	FEB	MAR	APR	MAY	JUN	Total
2011/2012	21	27											48
2010/2011	45	20	29	39	29	35	31	15	25	21	19	23	331
2009/2010	48	26	38	48	42	40	29	27	27	21	29	26	401
2008/2009	24	39	38	30	27	28	34	22	19	24	20	21	326
2007/2008	20	25	21	43	16	25	26	22	20	26	17	24	285

Date	Address	Size
8/1	1765 Ala Moana Blvd.	6" C.I.
8/7	87-141 Maipalaoa Rd.	8" P.V.C.
8/7	2203 Apaakuma St.	4" C.I.
8/10	2385 Palolo Ave.	8" C.I.
8/11	930 McCully St.	16" C.I.
8/12	3627 Diamond Head Cir.	6" C.I.
8/13	92-356 Farrington Hwy.	24" C.C.
8/14	1401 Houghtailing St.	8" C.I.
8/14	2003 Nuuanu Ave.	6" C.I.
8/15	4512 Malia St.	8" C.I.
8/15	95-266 Wailawa St.	8" A.C.
8/16	1602 Auiki St.	8" C.I.
8/16	252 Hakalau Pl.	4" C.I.
8/17	1030 Kaili St.	6" C.I.
8/19	7548 Mokunoio Pl.	8" D.I.
8/21	91-652 Waihua Pl.	8" D.I.
8/24	98-282 Ualo St.	8" C.I.
8/24	230 Libby St.	8" C.I.
8/25	easement--266 Kaelepulu Dr.	8" A.C.
8/26	1446 Alewa Dr.	4" C.I.
8/26	2921 Kuahiwi Wy.	4" C.I.
8/29	2010 9th Ave.	8" C.I.
8/29	2593 Booth Rd.	6" C.I.
8/30	2587 Booth Rd.	6" C.I.
8/30	Thomas St. & Glen Ave.	8" P.V.C.
8/31	2339 Hooehoihi St.	8" C.I.
8/31	2123 Makanani Dr.	6" C.I.



DISCUSSION

The Board requested the report be revised to differentiate between main breaks and proactive main repairs and in the future to include the average water loss per each main break.

MOTION TO
RECESS INTO
EXECUTIVE
SESSION

Upon unanimously approved motion, the Board Recessed into Executive Session Pursuant to HRS § 92-5 at 2:49 PM to Consult with the Board's Attorney on Questions and Issues Pertaining to the Matters Posted for Discussion at an Executive Session.

OPEN
SESSION

The Board reconvened in open session at 3:29 PM.

Vice-Chairman De Costa announced Acting Manager Dean Nakano to review and report back to the Board on certain personnel contractual matters.

Dates and location for the Manager/Chief Engineer interviews were agreed on and a meeting notice will be posted.

MOTION TO
ADJOURN

There being no further business, Vice-Chairman De Costa at 3:30 P.M. called for a motion to adjourn the Open Session. Theresia McMurdo so moved; seconded by Westley Chun and unanimously carried.

THE MINUTES OF THE REGULAR SESSION BOARD
MEETING ON SEPTEMBER 29, 2011 WERE
APPROVED ON 10/24/2011

	AYE	NO	COMMENT
RANDALL Y. S. CHUNG	X		
DENISE M. C. DE COSTA	X		
DUANE R. MIYASHIRO	X		
THERESIA C. MCMURDO	X		
ADAM C. WONG	X		
WESTLEY K. C. CHUN	X		
GLENN M. OKIMOTO		X	

Respectfully submitted,


NANCY TANO

APPROVED:


RANDALL Y. S. CHUNG
Chairman of the Board

OCT 24 2011

Date